



## Cell Extraction

Product No	Product Name (Description)	PKG Size	Storage	Normal Price (RM)	Special Price (RM)
03969-21	Protease Inhibitor Cocktail(EDTA free)(100x)	5x1ml	-20	<del>4020</del>	540
04080-11	Protease Inhibitor Cocktail 100X for general use	5x1ml	-20	<del>4020</del>	540
07575-51	Phosphatase Inhibitor Cocktail (EDTA free)	1ml	4	<del>660</del>	560
08714-04	RIPA Buffer (10X)	A: 2ml x 5 B: 2ml x 5	-20	<del>500</del>	393
25955-11	Protease Inhibitor Cocktail for Use with Mammalian Cell and Tissue Extracts	5x1ml	-20	<del>1140</del>	780

## Protein Assay

Product No	Product Name (Description)	PKG Size	Storage	Normal Price (RM)	Special Price (RM)
06385-00	Protein Assay Bicinchoninate Kit	A: 250ml x 2 B: 10ml	4	<del>620</del>	460
11617-71	Protein Assay CBB solution (Bradford)	1 L	4	<del>620</del>	460

## Protein Electrophoresis

Product No	Product Name (Description)	PKG Size	Storage	Normal Price (RM)	Special Price (RM)
02525-35	Pre-stained Protein Markers(Broad Range) for SDS-PAGE	500ul	-20	<del>620</del>	326
11642-31	CBB Stain One Super(Ready To Use)	1L	RT	<del>600</del>	260
04543-51	CBB Stain One(Ready To Use)	1 L	RT	<del>600</del>	260
06144-05	30(w/v)%-Acrylamide/Bis Mixed Solution(37.5:1)	500ml	4	<del>440</del>	326
06141-35	30(w/v)%-Acrylamide/Bis Mixed Solution(29:1)	500ml	4	<del>440</del>	326
06121-95	40(w/v)%-Acrylamide/Bis Mixed Solution(37.5:1)	500ml	4	<del>560</del>	326
06119-45	40(w/v)%-Acrylamide/Bis Mixed Solution(29:1)	500ml	4	<del>560</del>	326
07831-94	WIDE RANGE Gel Preparation Buffer(4x) for PAGE	250ml	4	<del>452</del>	260
29458-24	Protein Markers(M.W. 6,500~200,000)(10x) for SDS-PAGE	200ul	-20	<del>1060</del>	326
30566-22	Sample Buffer Solution with 2-ME(2x) for SDS-PAGE	25ml	4	<del>264</del>	220

## Western Blot

Product No	Product Name (Description)	PKG Size	Storage	Normal Price (RM)	Special Price (RM)
03953-95	Blocking One	500ml	4	<del>312</del>	180
07880-70	Chemi-Lumi One L (for 4000cm <sup>2</sup> membrane)	A: 250ml B: 250ml	4	<del>1120</del>	560
02230-30	Chemi-Lumi One Super (for 1,000cm <sup>2</sup> membrane)	A: 50ml B: 50ml	4	<del>1240</del>	620
11644-40	Chemi-Lumi One Ultra	A: 50ml B: 50ml	4	<del>1980</del>	1788

### Terms and Conditions

- Any Purchase of special price product (page 1) will entitle a 10% discount for 1 item in the following pages (page 2- 4) in single PO.
- Promotion valid from 1<sup>st</sup> May 2017 - 31<sup>st</sup> December 2017

## Ordering Information

Product Name	Storage	Product No.	PKG Size
Bullet PAGE One Precast Gel, 5-11%, 13 wells	R	13077-04	10 sheets
Bullet PAGE One Precast Gel, 5-11%, 17 wells	R	13078-94	10 sheets
Bullet PAGE One Precast Gel, 5-15%, 13 wells	R	13079-84	10 sheets
Bullet PAGE One Precast Gel, 5-15%, 17 wells	R	13080-44	10 sheets
Bullet PAGE One Precast Gel, 6%, 13 wells	R	13081-34	10 sheets
Bullet PAGE One Precast Gel, 6%, 17 wells	R	13082-24	10 sheets
Bullet PAGE One Precast Gel, 8%, 13 wells	R	13083-14	10 sheets
Bullet PAGE One Precast Gel, 8%, 17 wells	R	13084-04	10 sheets

[Storage] R = Refrigerator

## Related Products

Product Name	Storage	Product No.	PKG Size
Albumin, Bovine, Solution (2mg/ml) for Protein Assay	F	00653-31	10 x 1ml

[Storage] RT= Room temperature, F=Freezer

# Electrophoresis Tank for Bullet PAGE One Precast Gel

## Specification

Size: 154W×88D×146H (mm)  
 Required Buffer Volume: 800 ml



## Ordering Information

Product Name	Storage	Product No.	PKG Size
WEP-N Vertical Electrophoresis Tank	RT	WEP-N	1 Set

[Storage] RT = Room temperature

# WIDE RANGE Gel Preparation Buffer (4x) for PAGE

Gradient gels offer a much wider separation range of proteins than single percentage gels. However, casting gradient gels is more difficult and labor intensive. WIDE RANGE Gel Preparation Buffer offers a gradient gel-like separation on a single percentage gel by simply mixing it with acrylamide/ bisacrylamide gel casting solution. The gel can be used with the common sample buffers and running buffers. It is also suitable for standard staining methods including CBB and silver staining.

### » Simple casting procedure

WIDE RANGE Gel Preparation buffer is a 4x concentrated neutral pH buffer. It can be used for preparation of both stacking gel and separation gel by replacing the Tris-HCl buffer in Laemmli buffer system.



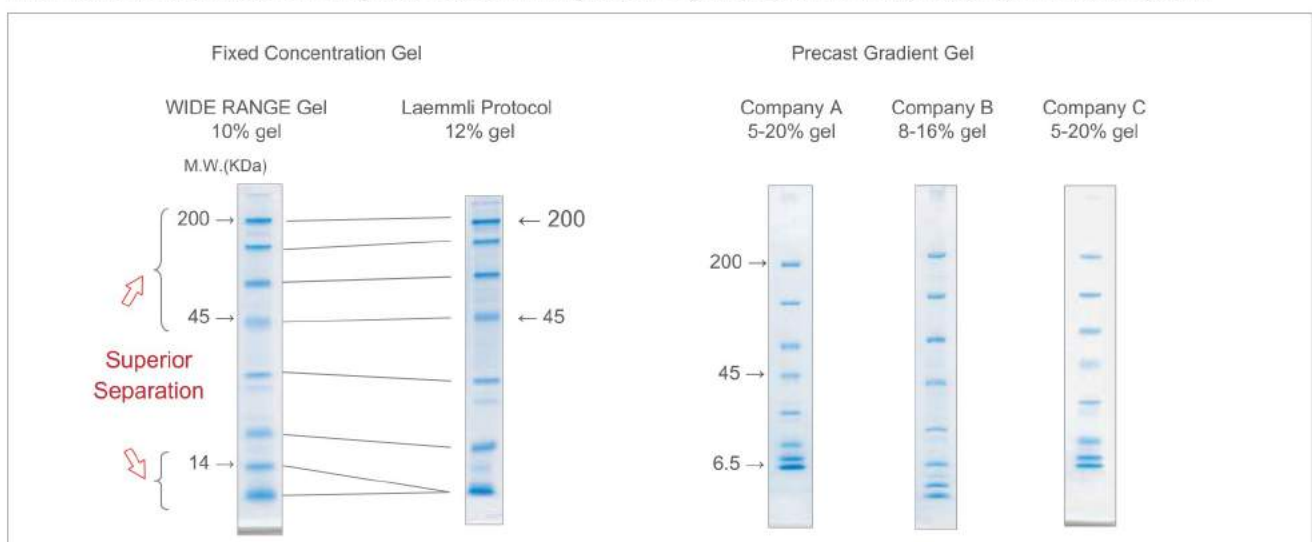
### » Improved stability and strength

The increased tensile strength allows easy handling even a low percentage gel. The neutral pH buffer improves the stability of gel resulting in a longer shelf life than the gel with Laemmli buffer system.



### » A wide separation range

WIDE RANGE Gel provides a much greater separation range than the gel casted with a conventional Laemmli buffer system.



# Polyacrylamide Gel Casting Reagents

Product Name	Storage	Product No.	PKG Size
<b>Acrylamides (monomer)</b>			
Acrylamide (monomer), Purity, 99%	RT	00809-14	100 g
		00809-85	500 g
Acrylamide (monomer), Purity, 99%, Nuclease and Protease tested	RT	06114-24	100 g
		06114-95	500 g
		06114-11	1 kg
<b>Crosslinking Agents</b>			
N,N'-Methylenebisacrylamide, [BIS]	R	22402-02	25 g
N,N'-Methylenebisacrylamide, Purity, 99%, Nuclease and Protease tested	R	22407-52	25 g
<b>Polymerization Initiators</b>			
N,N,N',N'-Tetramethylethylenediamine TEMED]	RT	33401-72	25 g
<b>Polymerization Promotors</b>			
Ammonium Peroxodisulfate [APS]	R	02627-21	1 g
		02627-34	10 g
10 (w/v)%-Ammonium Peroxodisulfate Solution	F	02634-34	10 ml
<b>Gel Buffer Solutions</b>			
Separating Gel Buffer Solution (4x) for SDS-PAGE, pH8.8 Filtrated by 0.45 µm filter Components : 1.5M-Tris-HCl, 0.4 (w/v)%-SDS	RT	30651-05	500 ml
Stacking Gel Buffer Solution (4x) with Dye for SDS-PAGE, pH6.8 Filtrated by 0.45 µm filter Components : 0.5M-Tris-HCl, 0.4(w/v)%-SDS	R	09268-34	100 ml
Stacking Gel Buffer Solution (4x) for SDS-PAGE, pH6.8 Filtrated by 0.45 µm filter Components : 0.5M-Tris-HCl, 0.4 (w/v)%-SDS	R	09267-44	100 ml
		32158-25	500 ml

## Running Buffers & Sample Loading Buffer

Product Name	Storage	Product No.	PKG Size
<b>Pre-mixed Buffers</b>			
Running Buffer Solution (10x) for SDS-PAGE,Tris-Glycine, Filtrated by 0.45 µm filter Components: 0.25 mol/l-Tris, 1.92 mol/l-glycine, 10 g/l-SDS	RT	30329-61	1 L
		30329-74	5 L
Running Buffer Solution (10x) for PAGE,Tris-Glycine, Filtrated by 0.45 µm filter Components: 0.25 mol/l-Tris, 1.92 mol/l-glycine	RT	30340-91	1 L
<b>Buffer Adjusting Reagents</b>			
Tris(hydroxymethyl)aminomethane, Purity, 99%	RT	35410-34	100 g
Tris(hydroxymethyl)aminomethane, Purity, 99.9%, Nuclease and Protease tested	RT	35434-76	100 g
		35434-05	500 g
		35434-21	1 kg
Sodium Lauryl Sulfate [Sodium Dodecyl Sulfate;SDS, Purity, 99%	RT	31607-52	25 g
		31607-94	100 g
		31607-65	500 g
Sodium Lauryl Sulfate granular [Sodium Dodecyl Sulfate;SDS] Purity, 99%, Solids (granular)	RT	02873-62	25 g
		02873-04	100 g
		02873-75	500 g
Sodium Lauryl Sulfate [Sodium Dodecyl Sulfate;SDS] Purity, 99.5%	RT	30400-72	25 g
		30400-85	500 g
10%-SDS Solution [10%-Sodium Lauryl Sulfate Solution]	RT	30562-04	100 ml
Glycine	RT	17128-14	100 g
Glycine, Nuclease and Protease tested	RT	17141-24	100 g
		17141-95	500 g
Tricine (N-[Tris(hydroxymethyl)methyl]glycine)	RT	34713-62	25 g
		34713-04	100 g
Tricine (N-[Tris(hydroxymethyl)methyl]glycine) Nuclease and Protease tested	RT	02437-24	100 g

[Storage] RT = Room temperature, R = Refrigerator, F = Freezer

Product Name	Storage	Product No.	PKG Size
<b>Sample Buffers</b>			
Sample Buffer Solution with Reducing Reagent (6x) for SDS-PAGE pH6.8 Filtrated by 0.45 µm filter, Components: 0.375M-Tris-HCl, 0.03(w/v)%-BPB, glycerin, anion surface acting agent and reducing agent	R	09499-14	5 ml
Sample Buffer Solution without Reducing Reagent (6x) for SDS-PAGE pH6.8 Filtrated by 0.45 µm filter, Components: 0.375M-Tris-HCl, 0.03(w/v)%-BPB, glycerin and anion surface acting agent	R	09500-64	5 ml
Sample Buffer Solution with 2-ME (2x) for SDS-PAGE pH6.8 Filtrated by 0.45 µm filter, Components: 0.125M-Tris-HCl, 4(w/v)%-SDS, 20(v/v)%-glycerin, 0.01(w/v)%-BPB, 10(v/v)%-2-ME	R	30566-22	25 ml
Sample Buffer Solution without 2-ME (2x) for SDS-PAGE pH6.8 Filtrated by 0.45 µm filter, Components: 0.125M-Tris-HCl, 4(w/v)%-SDS, 20(v/v)%-glycerin, 0.01(w/v)%-BPB	R	30567-12	25 ml

Product Name	Storage	Product No.	PKG Size
<b>Reducing Agent</b>			
2-Mercaptoethanol	RT	21418-42 21418-84 21418-55	25 g 100 g 500 g
Dithiothreitol	R	14112-36 14112-81 14112-94 14112-52	100 mg 1 g 5 g 25 g
Tris (2-carboxyethyl) phosphine Hydrochloride (TCEP)	R	07277-61	1 g
<b>Tracking Dyes</b>			
Bromophenol Blue	RT	05808-61 05808-32	1 g 25 g
<b>Others</b>			
Glycerol Nuclease and Protease tested	RT	17045-94 17045-65	100 ml 500 ml

[Storage] RT = Room temperature, R = Refrigerator

## Chemiluminescent Western Blotting Substrates

Chemi-Lumi One is a series of high sensitive luminol-based chemiluminescence assay kits for Western Blotting. Three types of chemiluminescent substrates are available for Western blot detection with horseradish peroxidase enzyme (HRP).

Product Name	Chemi-Lumi One L	Chemi-Lumi One Super	Chemi-Lumi One Ultra
Product No.	07880	02230	11644
Lower Detection Limit	Low-picogram	Mid-femtogram	Low-femtogram
Required Working Solution	Approx. 0.125 ml / cm <sup>2</sup>	Approx. 0.1 ml / cm <sup>2</sup>	Approx. 0.1 ml / cm <sup>2</sup>
Suggested Antibody Dilution Ratio	Primary: 1:1,000-1:5,000 Secondary: 1:20,000-1:100,000	Primary: 1:1,000-1:20,000 Secondary: 1:20,000-1:200,000	Primary: 1:5,000-1:100,000 Secondary: 1:100,000-1:500,000
Reaction Period	1 min.	1 min.	5 min.
Comparable to	ECL SuperSignal Pico	ECL Prime SuperSignal Dura	ECL Select SuperSignal Femto
Sensitivity			
<Condition> Antigen: Anti-Mouse IgG (Goat), HRP Conjugated (Santa Cruz, sc-2005) Detection: L (1 min.) Super (1 min.) Ultra (5 min.) Detector: LAS-3000 Super mode (Analyze 3 min. later after reaction with each substrate) Ex. time: 30 min.			

### ● Chemi-Lumi One L

- » Suitable for optimization of target proteins
- » Reasonable price
- » Detect wide range of protein concentration



### Comparison of sensitivity with competitors

Chemi-Lumi One L offers similar sensitivity to T and W company's products and higher sensitivity than G company's products.

β-Actin (ng)	50	25	12.5	6.25	3.13	<Condition>
Chemi-Lumi One L						Gel: 10% PAGE gel Wash: 0.1% t-TBS(1x), pH7.4 Blocking: Blocking One 1st Ab: Anti-β-Actin Mouse Monol Antibody, (Santa Cruz sc-47778), 1:1,000 2nd Ab: Anti-Mouse IgG (Goat)-HRP, (Santa Cruz sc-2005), 1:20,000 Detection: Chemi-Lumi One L; 1 min. Competitor G, T and W; 1min. Detector: LAS-3000 High mode Ex. time: 5 min.
Competitor G						
Competitor T						
Competitor W						

For orders & enquiries, please contact:

+603 8945 1482

info@axonscientific.com

/AxonScientific

www.axonscientific.com

